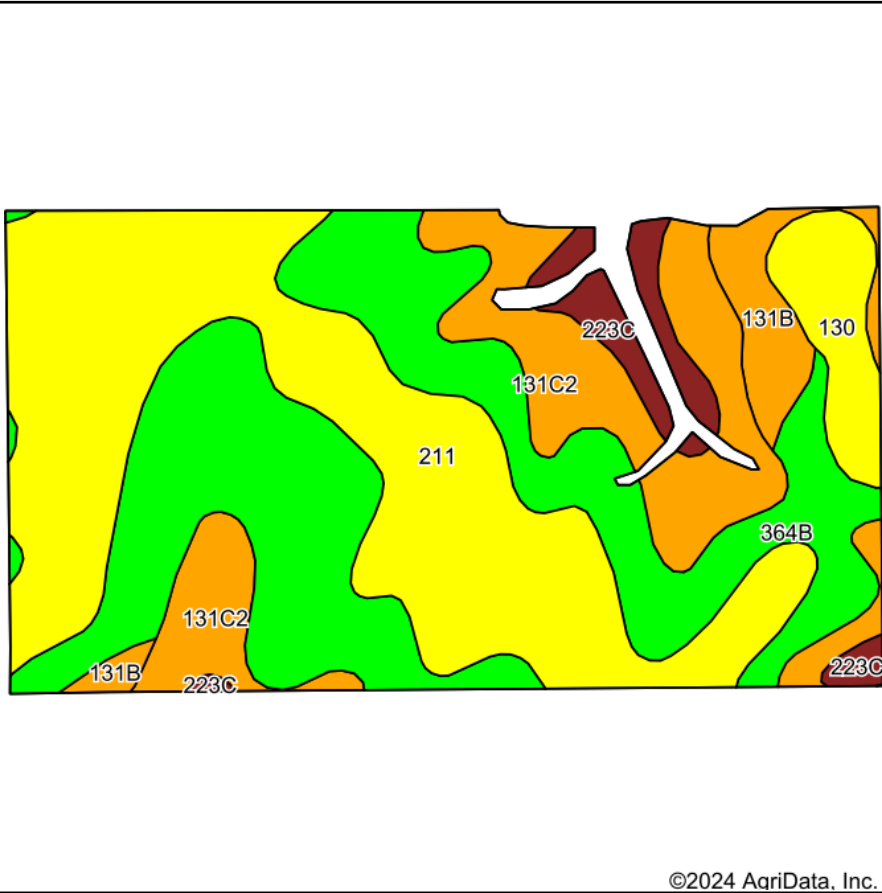
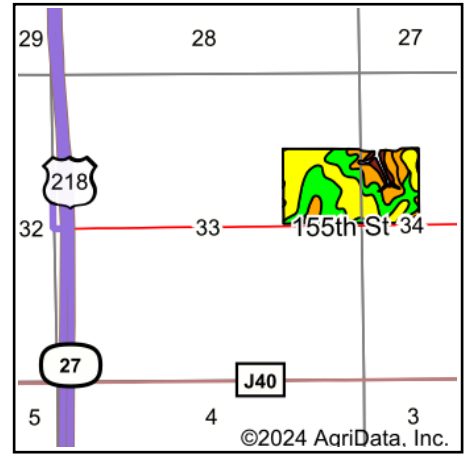


Soils Map



©2024 AgriData, Inc.

Soils data provided by USDA and NRCS.



©2024 AgriData, Inc.

State: **Iowa**
 County: **Lee**
 Location: **34-69N-6W**
 Township: **Marion**
 Acres: **67.13**
 Date: **5/9/2024**



Maps Provided By:



© AgriData, Inc. 2023

www.AgriDataInc.com



Area Symbol: IA111, Soil Area Version: 32

| Code | Soil Description | Acres | Percent of field | CSR2 Legend | Non-Irr Class *c | CSR2** | CSR | |
|-------------------------|--|-------|------------------|-------------|------------------|-------------|-------------|-----------|
| 211 | Edina silt loam, 0 to 1 percent slopes | 24.17 | 36.0% | | IIIw | 59 | 60 | |
| 364B | Grundy silt loam, 2 to 5 percent slopes | 23.59 | 35.1% | | Ile | 73 | 75 | |
| 131C2 | Pershing silt loam, 5 to 9 percent slopes, moderately eroded | 10.87 | 16.2% | | IIIe | 62 | 45 | |
| 130 | Belinda silt loam, 0 to 2 percent slopes | 3.04 | 4.5% | | IIIw | 47 | 63 | |
| 131B | Pershing silt loam, 2 to 5 percent slopes | 2.78 | 4.1% | | IIIe | 70 | 67 | |
| 223C | Rinda silt loam, 5 to 9 percent slopes | 2.68 | 4.0% | | IVw | 37 | 27 | |
| Weighted Average | | | | | | 2.69 | 63.4 | 62 |

**IA has updated the CSR values for each county to CSR2.

*c: Using Capabilities Class Dominant Condition Aggregation Method

Soils data provided by USDA and NRCS.